

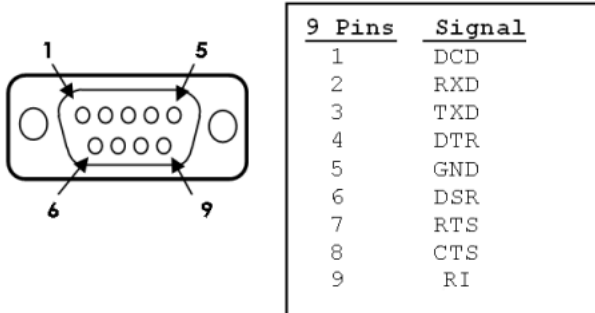
# LIGHTWORKS MK1 CONSOLE INSTALLATION INSTRUCTIONS FOR WINDOWS 7/8/10

WITH STARTECH Product ID: ICUSB2321F FTDI RS232 com port to USB adapter

1. Make sure you have the above part number DTE protocol adapter for a straight wired serial cable.

This is the pin table for the DTE adapter:

## Pinout



Instruction Manual

4

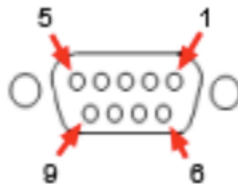
StarTech.com  
Hard-to-find made easy®

There is also a null modem DCE version of this adapter that reverses RXD and TXD pin assignments, Product ID: ICUSB232FTN. It will still work, but you will need to reverse the pin2/pin 3 wiring at the adapter. You will also need to wire console RTS to adapter CTS for this version.

Pin table for the DCE null modem version.

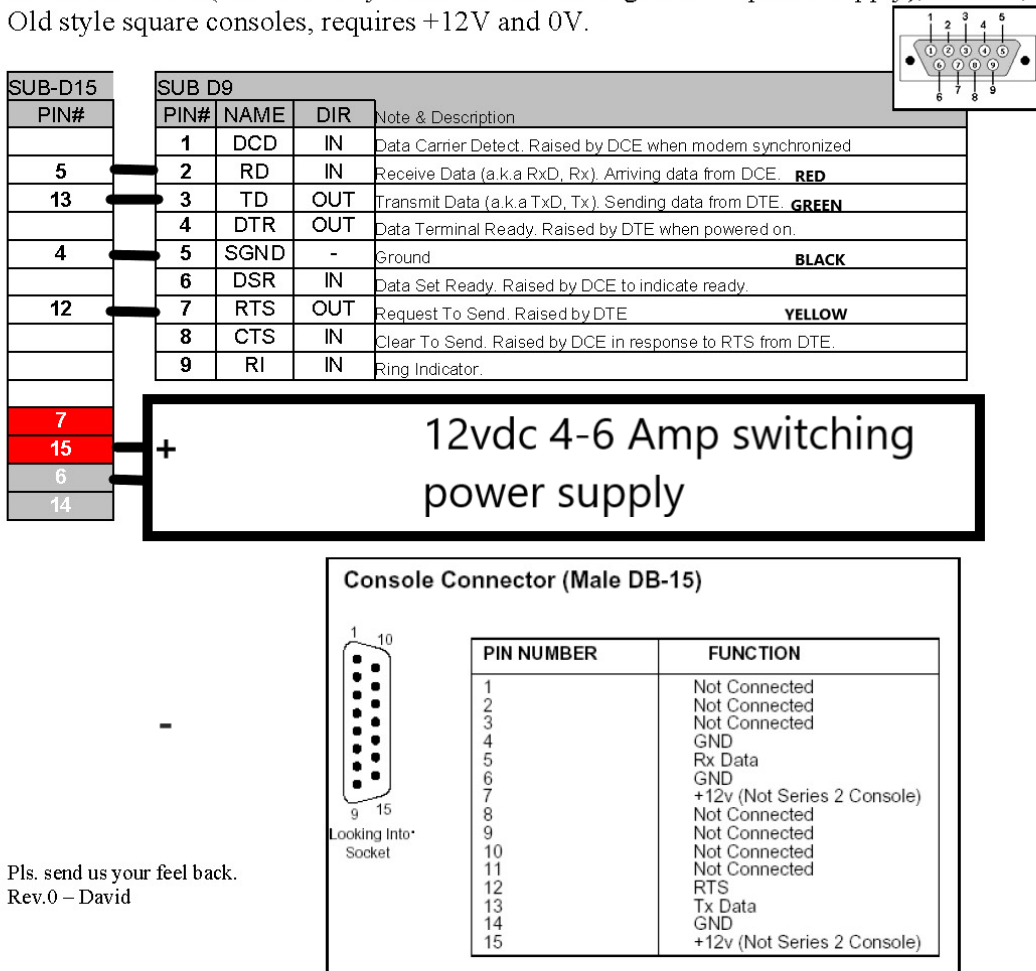
## Pinout

Pin	Signal
1	DCD
2	TxD
3	RxD
4	DTR
5	GND
6	DSR
7	RTS
8	CTS
9	RI



## 2. CABLE WIRING DIAGRAM FOR DTE ADAPTER

Console series 2 (VIP and early Touch versions using external power supply), series 1, Old style square consoles, requires +12V and 0V.



**INTERLAB**, 5 rue Jacques Grévin, 78540 Vernouillet, France – Tel: +33 1 3971 7337 – Fax: +33 1 3928 9008  
Email: [Sales@Interlab-net.com](mailto:Sales@Interlab-net.com) - Vat Id: FR-12.330.255.415 – Siret: 330.255.415.00011

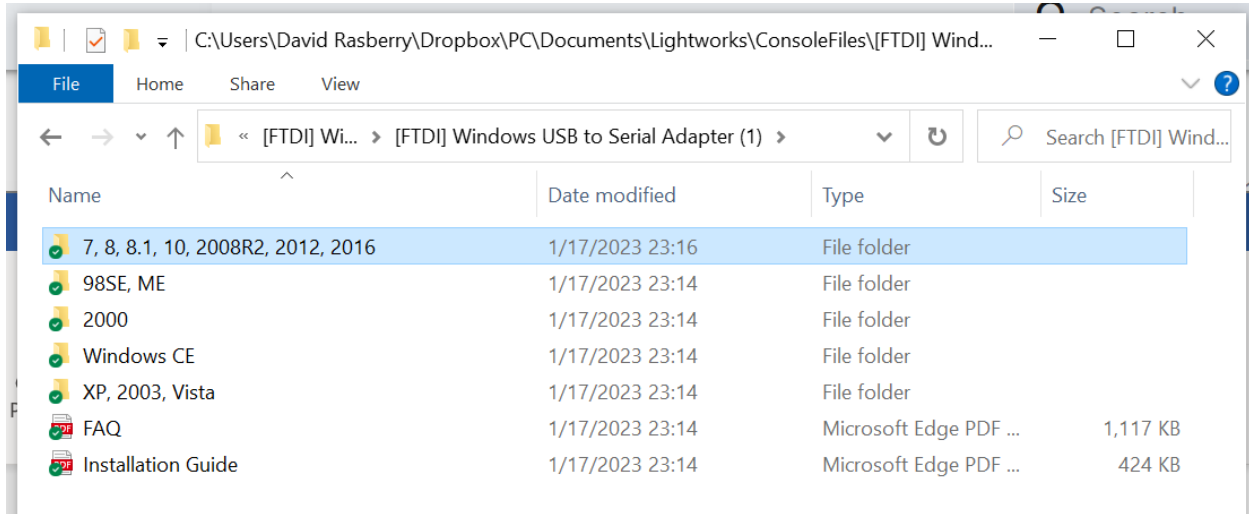
NOTE: Power pins on the console connector are internally bussed so you only need to connect one +12v pin and one ground pin. I used pin 14 and pin 6 because they are on different rows for better separation and less chance of a short. Easier to wire.

### 3. INSTALL THE FTDI SERIAL ADAPTER AND DRIVERS

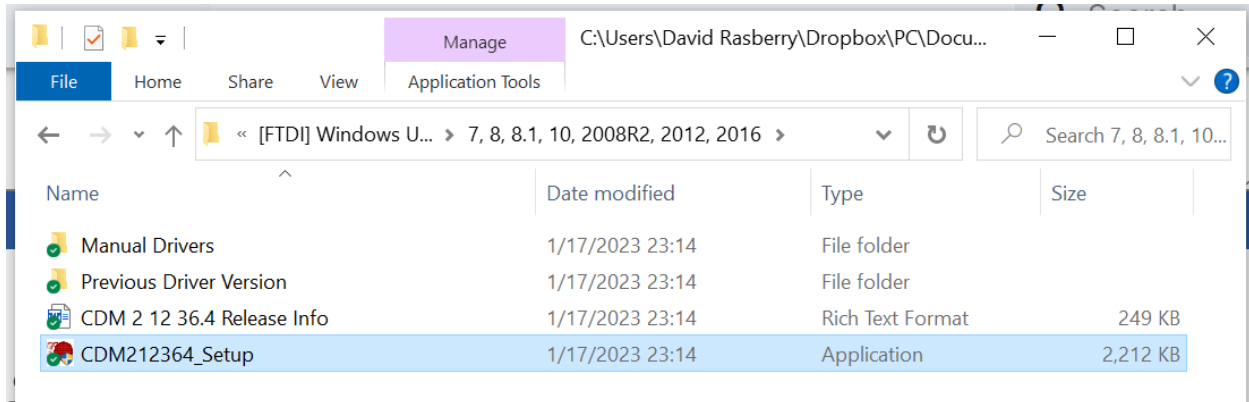
Download the FTDI driver package from the Startech website:

<https://www.startech.com/en-us/cards-adapters/icusb2321f>

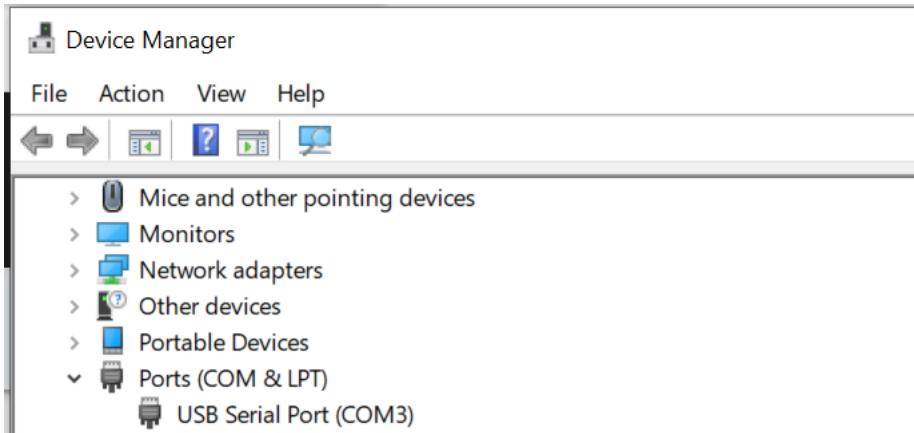
- a. Extract the zip file to a convenient location.
- b. Connect the FTDI adapter to the USB port you will use for the console.
- c. Open the Windows driver folder:



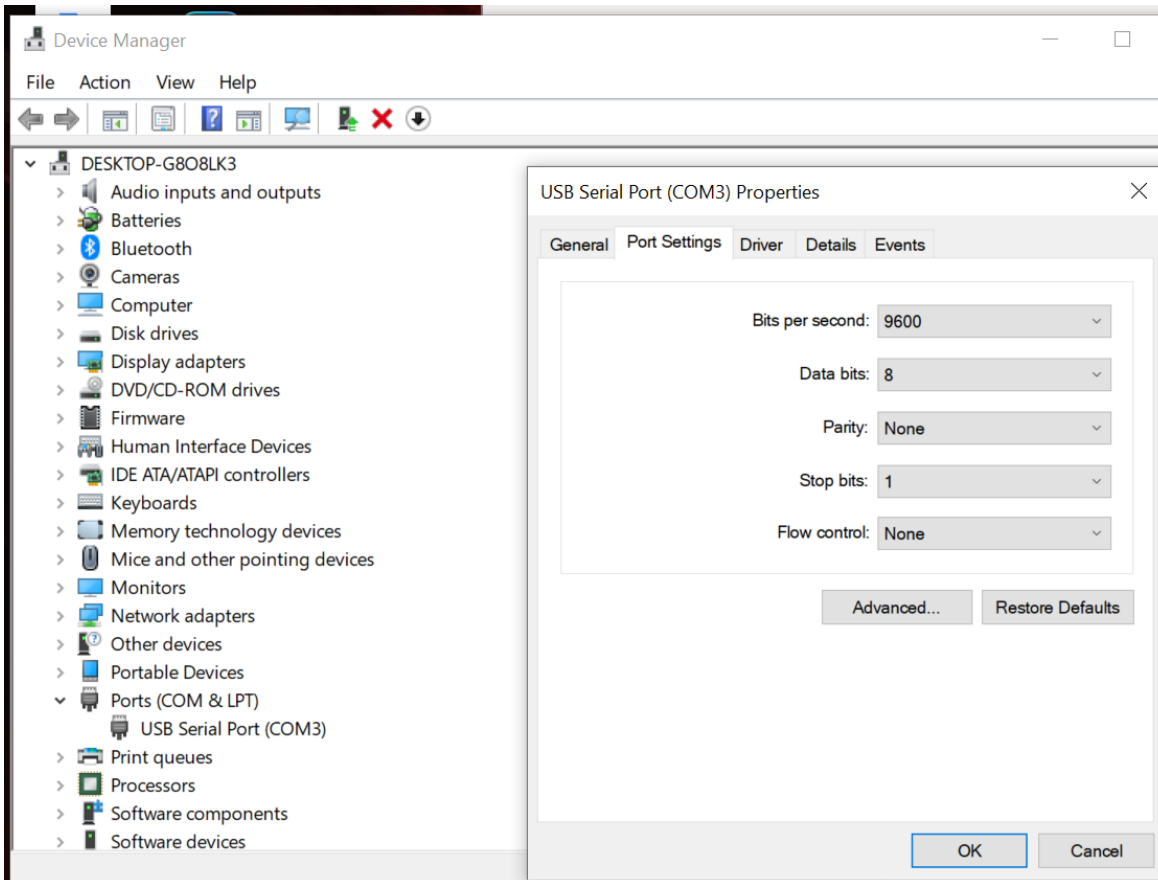
- d. Run the setup application



e. Reboot your computer and open device manager. Look for the “Ports COM/LPT” directory. If you don’t see it check the show hidden devices from the view menu. You should find something like this:



The COM port number assignment may vary depending on which USB port the adapter is connected to. Open the properties dialog for the COM port.



The default port settings shown above work fine for the console.

#### 4. INSTALL THE CONSOLE

Connect the console to the serial adapter and to its power supply.

Download ConsoleFiles.zip from the first post in this thread.

Run the SetupConsole application.

Open My Computer and browse to this location: C:\windows\syswow64\drivers.

Cut and paste these files: lw moucon.sys, lw moucon.ram and vipcons.ram  
here: C:\windows\system32\drivers

Move the included LWMOUCON.sys file into C:\windows\system32\drivers overwriting the old file.  
Restart Windows.

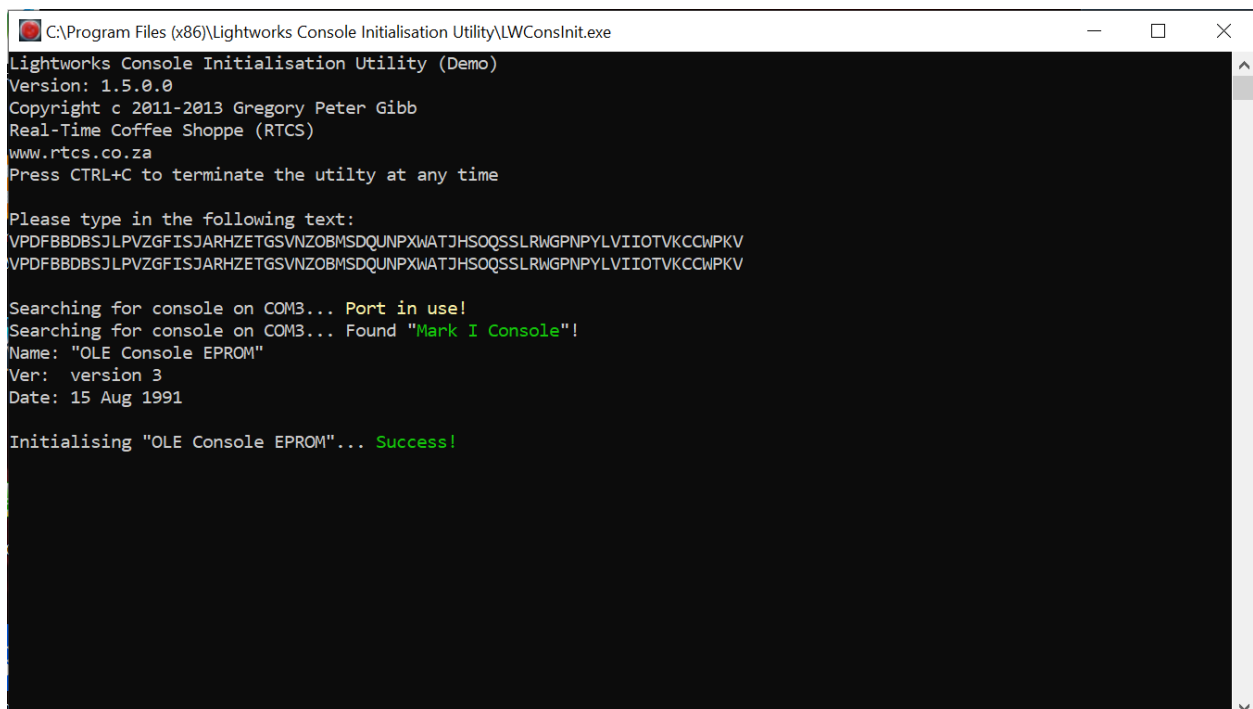
Open Lightworks

Check that Lightworks Console Support is switched on under System Settings on the project page.

Your console should now be working. If not, you may need to run the third party console initialization utility. The trial version is included with the console files, but it can be an absolute pest because of the protection. You must enter a long string of characters as shown. Mistype one letter, the app closes and you must start over.

The utility writes firmware to the console EPROM. The firmware remains active as long as the console is powered. If you disconnect the power supply, you will need to run the utility again.

If the utility works as expected, the stop light on the console will turn on. This is what a successful initialization will show:



```
C:\Program Files (x86)\Lightworks Console Initialisation Utility\LWConslnit.exe
Lightworks Console Initialisation Utility (Demo)
Version: 1.5.0.0
Copyright c 2011-2013 Gregory Peter Gibb
Real-Time Coffee Shoppe (RTCS)
www.rtcs.co.za
Press CTRL+C to terminate the utility at any time

Please type in the following text:
VPDFBDBSJJLPVZGFISJARHZETGSVNZOBMSDQUNPXWATJHSOQSSLRWGPNPYLVIIOTVKCCWPKV
VPDFBDBSJJLPVZGFISJARHZETGSVNZOBMSDQUNPXWATJHSOQSSLRWGPNPYLVIIOTVKCCWPKV

Searching for console on COM3... Port in use!
Searching for console on COM3... Found "Mark I Console"!
Name: "OLE Console EPROM"
Ver: version 3
Date: 15 Aug 1991

Initialising "OLE Console EPROM"... Success!
```